

13th International Conference on Contact Mechanics and Wear of Rail/Wheel Systems (CM2025)

JSCMR

Home

Abstract Submission

Submission for a full paper

[Submission](#)

Contact : Regarding to 「Abstract Submission」 「File Uploads」

cm2025@jscmr.jp

Registered fullpaper Confirmation, Revision, Withdrawal, and File Uploads

Please log in by entering your application number and the password.

Conference

▼ Please select

▼ Please select

CM2025_Poster Data Submission

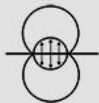
13th International Conference on Contact Mechanics and Wear of Rail/Wheel Systems (CM2025)

› If you have forgotten your password

Select here

“CM2025_Poster Data Submission”

← → ↻ 🏠 🔒 https://www.sasj2.net/MAS/jscmr/welcome 🔍

13th International Conference on Contact Mechanics and Wear of Rail/Wheel Systems (CM2025)
JSCMR

Home >
Abstract Submission

Submission for a full paper
[Submission](#)

Contact : Regarding to 「Abstract Submission」 「File Uploads」
cm2025@jscmr.jp

Registered fullpaper Confirmation, Revision, Withdrawal
Please log in by entering your application number and the password.

Conference. You cannot log in because the login ID and password do not match the operation permission.

Conference

CM2025_Poster Data Submission

ID

U00203

Password

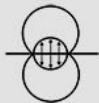
.....

Login

> If you have forgotten your password

Input your ID and Password
Please use the same ID and password as those used for the full paper submission.

← → ↻ 🏠 🔒 https://www.sasj2.net/MAS/jscmr/welcome 🔍

13th International Conference on Contact Mechanics and Wear of Rail/Wheel Systems (CM2025)
JSCMR

Home >
Abstract Submission

Submission for a full paper
[Submission](#)

Contact : Regarding to 「Abstract Submission」 「File Uploads」
cm2025@jscmr.jp

Registered fullpaper Confirmation, Revision, Withdrawal
Please log in by entering your application number and the password.

Conference. You cannot log in because the login ID and password do not match the operation permission.

Conference

CM2025_Poster Data Submission

ID

U00203

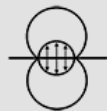
Password

.....

Login

> If you have forgotten your password

Input your ID and Password
Please use the same ID and password as those used for the full paper submission.



CM2025_Poster Data Submission

13th International Conference on Contact Mechanics and Wear of Rail/Wheel Systems (CM2025) (JSCMR)

Home >

Information

FileUpload

Contact

ChangePassword



Home

Prof. Yohei Michitsuji

ToDo

2025/07/28 10:44 You can upload [Shotgun Session] [Upload Menu](#)





CM2025_Poster Data Submission

13th International Conference on Contact Mechanics and Wear of Rail/Wheel Systems (CM2025) (JSCMR)



Logout

Home

Information

FileUpload

Contact

ChangePassword



FileUpload

Important Notice

- The last file you upload will be the **final submission**

Lecture No
Paper title

U00203
test input

Upload your PDF file from here

Description	Required	FileExtension	MaxSize(MB)	Limit Number of Updates	Operation
Shotgun Session	Require	pdf	2,000	0/10	Upload Download History